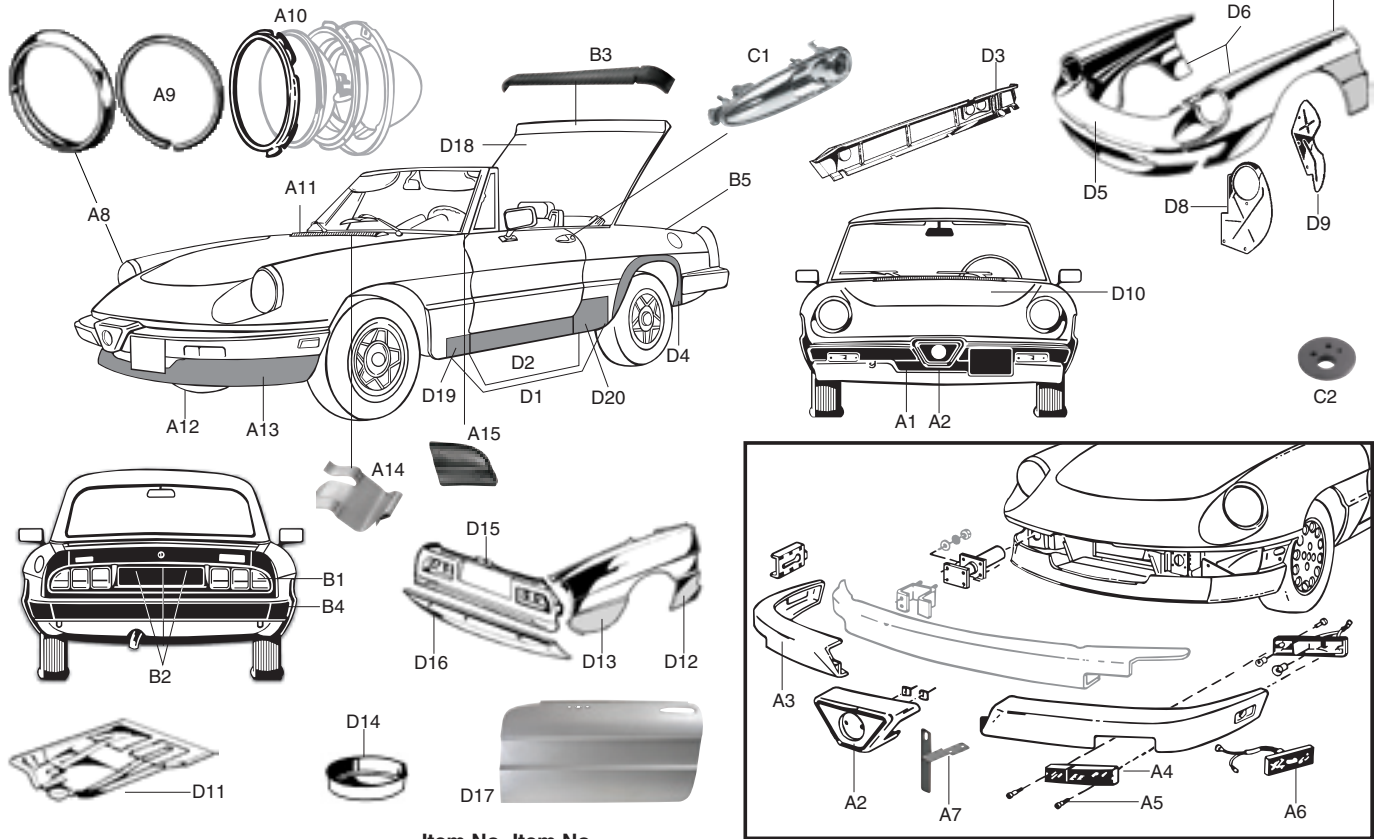


# ALFA ROMEO SPIDER, 1983-90



## FRONT END

	Item No.	Item No.	Price
	Driver	Pass.	
A1 Lower grille (center, black metal)	03767	—	\$124.50
A2 Bumper center pad with badge	08284	—	198.50
A3 Bumper side pad	03625	08281	389.00
A4 Front turn signal lamp lens only	23269	23273	39.50
A5 Plastic screw for above, amber color	23399	23399	2.05
A5 Plastic screw for above, clear	23398	23398	3.45
A6 Side marker assembly	23318	23318	79.50
A7 Front license plate bracket, req. 2	08301	—	48.50
A8 Headlamp rim, stainless steel	03804	83128	66.95
A8 Headlamp rim, chrome, Carello	83124	83125	67.95
A9 Gasket for headlamp rim (does both sides)	03819	—	9.25
A10 Headlight retaining ring	13524	13524	29.95
A11 Windshield gasket	43527	—	69.50
- Hood rubber bump plug (req. 2)	43646	43646	5.25
A12 Front spoiler, center section	03508	—	119.00
A13 Front spoiler, side section	03844	03843	119.50
A14 Spring clips to hold cowl vent panel (in front of windshield); need 7	43566	—	6.95
A15 Rubber molding under windshield pillars	34035	19039	6.95
- Cowl drain hose, molded, under dash	43643	—	26.50
- Grommet for cowl drain hose	08518	08518	4.45
- Hood rubber bump plug (req. 2)	43646	43646	5.25
- Engine cowl molding	43705	—	46.75

## REAR

B1 Rear lamp assembly	—	23332	\$274.50
B1 Rear lamp assembly (both sides)	23409	—	539.00
B2 License plate lamp (req. 3)	23296	—	45.50
B2 License plate lamp gasket (req. 1)	23297	—	17.95
B2 License plate lamp frame (req. 1)	23295	—	39.50
B3 Rear spoiler, 3-pc., hard rubber, no brake light, appear. not orig.	16061	—	398.00
B4 Rear bumper cover, 3-pc. complete	08287	—	618.00
B5 Trunk rubber molding	82722	—	24.95

## MISCELLANEOUS

	Item No.	Item No.	Price
	Driver	Pass.	
C1 Outer door handle (use your old lock)	93534	93533	\$105.00
C1 Outer door handle rubber gasket	43544	43544	6.50
- Lock with key	13287	13287	98.50
- Floor pan plugs, 2 1/2" rubber (need 5)	43685	—	3.95
C2 Firewall grommet for htr. hose, cables	43697	—	18.75
- Accelerator return spring	73408	—	9.50

## STEEL BODY PANELS

D1 Outer rocker repair panel	93306	93307	\$69.50
D2 Outer rocker panel, complete, as orig.	103521	103522	118.50
D3 Middle rocker panel	103523	103524	219.00
D3 Inner rocker panel	103525	103526	329.00
D4 Rear wheel arch repair section	93348	93349	59.50
D5 Upper nose cone*	93336	—	369.00
- Lower radiator support crossmember	03849	—	155.00
D6 Front fender, US spec*	93351	93353	439.00
D7 Front fender rear repair section	103514	103515	98.50
D8 Front fender inner liner, front section	03659	03658	79.50
D9 Front fender inner liner, rear section	03662	03661	73.50
- Cowl Panel	03547	—	259.50
D10 Engine hood*	03539	—	626.00
D11 Front floor pan section	03672	03669	285.00
- Rear floor pan section	03667	03668	339.00
D12 Quarter panel, front section	103516	103517	79.50
D13 Quarter panel, rear section	103518	103519	69.50
D14 Spare tire well	103501	—	189.00
D15 Rear upper valance panel	03644	—	545.00
D16 Rear lower valance panel	03506	—	189.50
D17 Door skin	03686	03687	269.00
D18 Trunk Lid*	35410	—	574.00
D19 Front jack point (to '89)	03863	03863	33.25
D20 Rear jack point	03864	03864	43.75

\* Shipped truck freight.

Top hardware & moldings: page 5; door parts page 75



## SPIDER HEADLAMP TRIM RINGS

During the Alfa Spider's long production run, two types of headlamp trim rings were used: chrome, which has the same finish back and front, and the original "Carello" stamp to the left of the screw hole, and stainless steel, which has a matte finish on the back with no markings. Knowing which type of trim ring is right for your car is a subtle—but important—part of keeping your Spider period-correct.