

ALFA ROMEO, ALFETTA, 6-CYL

From Italy or Germany.

ALFETTA, GTV6, Milano

Front Suspension

	Item No.	Price Ea.
Outer tie rod end, all	18000	\$17.95
Inner tie rod end, Milano	33256	44.50
Inner tie rod end, left side, GTV6	29062	48.95
Inner tie rod end, right side, GTV6	29061	48.95
Upper ball joint, Alfetta	18100	16.95
Upper ball joint, GTV6, Milano 1981-89	33538	27.95
Lower ball joint, all	18260	23.75

Front Suspension Bushings

Upper caster rod, front	91000	\$ 7.95
Upper caster rod, rear	31001	7.95
Upper control arm	910029	6.25
Lower A-arm	91004	29.50
Sway bar, center, 20mm, GTV-6 & Alfetta*	—	—
Sway bar, center, 24mm, Milano 2.5 (1988-89), 3.0 all*	—	—
Sway bar, end link, 1975-76	91020	5.95
Sway bar, end link, 1977-on	91007	4.95

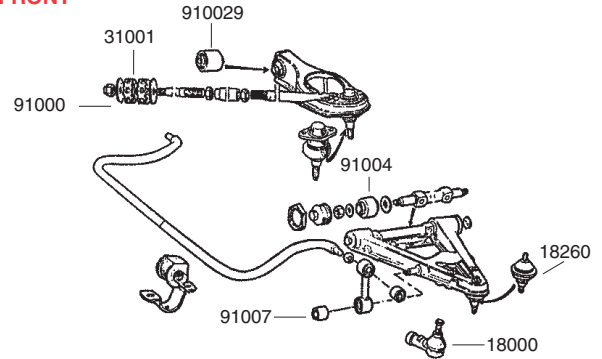
*See performance polyurethane bushings, page 51.

Rear Suspension

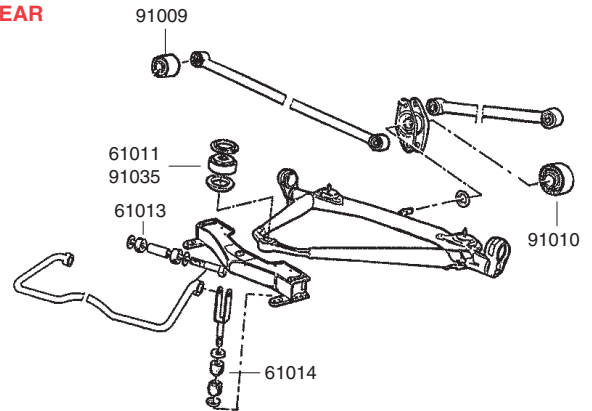
Rear swaybar center bushing, GTV6, Milano, (2 req.)	34009	6.95
Rear swaybar end bush., Alfetta, Milano, (top, 4 req.)	61013	1.20
Rear swaybar end bush., Alfetta, Milano, (lwr, 4 req.)	61014	1.85
Watts link (4 required)	91009	5.95
Watts link pivot (1 required)	91010	18.85
DeDion tube bushing, Alfetta, (1 required)	61011	8.25
DeDion tube bushing, GTV6, Milano, (1 required)	91035	8.95

Alfetta, GTV6, Milano

FRONT



REAR



164, 1991-95

Front Suspension

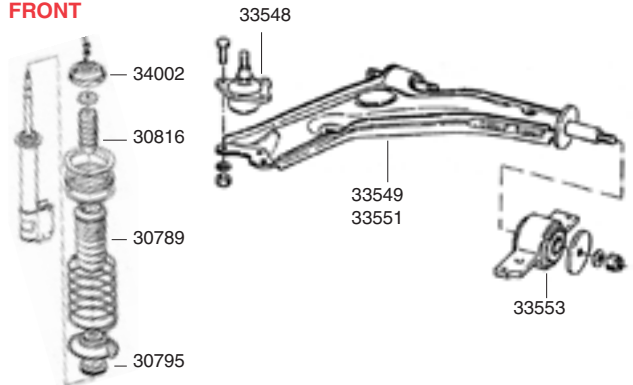
	Item No.	Price Ea.
Inner tie rod	33257	\$29.50
Outer tie rod	33547	29.50
Lower ball joint	33548	25.50
Front lower control arm, pass. side, w/out ball joint	33549	89.50
Front lower control arm, driver side, w/out ball joint	33551	89.50
Lower control arm rear bushing	33553	22.50
Front strut bearing	30795	25.50
Front strut shaft protective boot	30789	19.50
Strut bump stop (front or rear)	30816	18.75
Upper strut mount	34002	59.50
Front sway bar end link bush. at control arm, need 4	34007	2.50
Front sway bar end link w/bushing at bar, need 2	34006	14.95
Front sway bar center bushing	34032	4.95
Shifter bushing	36296	7.95

Rear Suspension

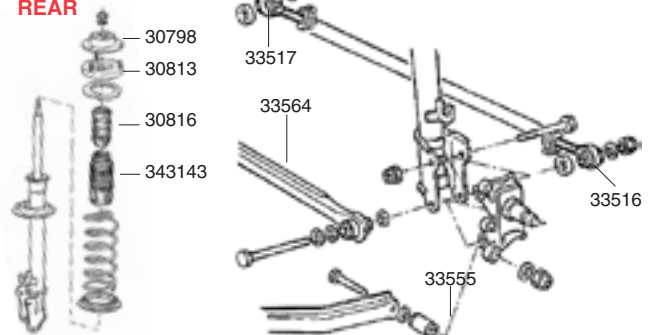
Outer tie rod end	33516	\$57.50
Inner tie rod end	33517	57.50
Rear trailing arm bushing (2 required)	33555	11.50
Rear suspension forward lateral link	33564	82.25
Strut bump stop (front or rear)	30816	18.75
Rear strut shaft protective boot	343143	24.75
Upper rear strut mount	30813	24.50
Upper rear strut flexible block	30798	28.45
Rear control arm and bushing, passenger's side	33598	79.50
Rear control arm and bushing, driver's side	33599	79.50

164

FRONT



REAR



ALFA ROMEO THROTTLE SHAFT BUSHING

1969-94 SPICA and Bosch injected Alfas, at the firewall. Also 1965-68 Duetto, GT CLUTCH CABLE LINKAGE BUSHING; and 1956-63 Giulietta 1300 Veloce CARB STRUT BUSHING in engine mount.
#9103, \$4.50

Did you know...

To achieve better fuel economy without reducing performance, Alfa introduced variable valve timing to the Spider in 1980.