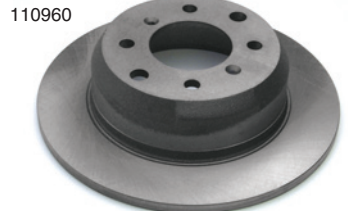


BRAKE DISCS (ROTORS)

Italian-made, OEM quality disc rotors for your Alfa, Fiat or Lancia.

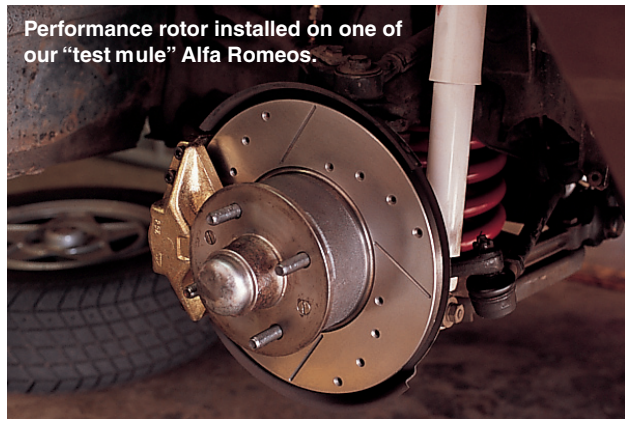


Model	Front No.	Price Each	Rear No.	Price Each
ALFA ROMEO				
Giulia 1600 GT, Super (ATE) 1750, 1969-71	—	—	110960	\$39.50
Driver side	110975	\$49.50	110960	39.50
Passenger side	(call*)	—	110960	39.50
2000 Spider, GTV, sedan 1972-94	110975	49.50	110960	39.50
Alfetta, 1975-80	110980	38.95	110990	30.95
GTV6, Milano 2.5, 3.0	110944	73.95	110945	34.95
164, 1991-93, all	06027	51.50	06026	36.50
164, 1994-95, 24-valve motor	06034	62.95	06026	36.50

FIAT, BERTONE, PININFARINA, LANCIA

All Fiat 1968-87 (except drum rear) and Pininfarina 1984-on	125911	\$18.50	125911	\$18.50
Pininfarina 1985-on from spares no. 5506004	06005	39.50	125911	18.50
Beta 1975-82	6805	44.95	6816	43.95
Scorpion	125911	18.50	125911	18.50

*Can use #110975 but lug bolts are right-hand thread. Call for options.

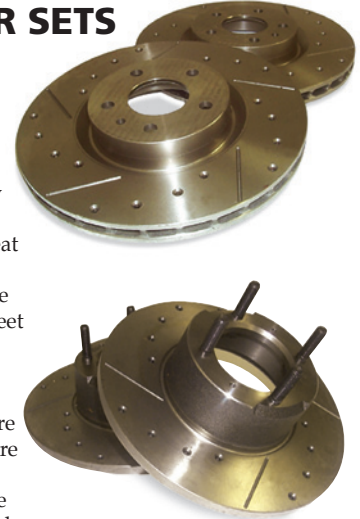


Performance rotor installed on one of our "test mule" Alfa Romeos.

PERFORMANCE BRAKE ROTOR SETS

CROSS-DRILLED & SLOTTED

Straight from Italy and the official supplier of a Formula 1 race team, our brake rotors are alternately drilled and slotted for maximum pad grip and heat and gas dissipation. The ideal brake system upgrade for aggressively-driven street or track cars, our rotors will greatly reduce brake fade and improve wet-weather braking. Rotors are carefully machined to assure maximum strength and longevity and to reduce the likelihood of warping. Sold in sets of two. With studs where applicable.



	Item No.	Price Per Set
ALFA ROMEO		
Spider, GTV & Berlina, 1969-94, Front	06058	\$164.50
Spider, GTV & Berlina, 1969-94, Rear	06059	149.50
Alfetta, 1975-80, Front	06056	154.50
Alfetta, 1975-80, Rear	06057	139.50
GTV6 & Milano, 1981-89, Front	06054	215.00
GTV6 & Milano, 1981-89, Rear	06055	126.50
164 1991-93, Front	06051	194.50
164 1994-95, Front	06053	189.50
164 1991-95, Rear	06052	138.50

FIAT, PININFARINA & BERTONE

All cars, 1968-87, Front (except 1985-on Pininfarina from spares #5506004)	06061	\$96.50
All cars with disc brakes, 1968-87, Rear	06061	96.50

BRAKE BOOSTER HOSES

A hard brake pedal often means a booster hose is leaking. We supply exact replacement hoses.



Model	Item No.	Price
Alfa Romeo, 1971-74, all	73501	\$ 8.95
Alfa Romeo Spider 1975-81	73501	8.95
Alfa Romeo, GTV6, Milano, all	01264	12.95
Fiat 124 Spider, 2000, Pinin. 1968-85	01266	12.95

BRAKE BOOSTERS

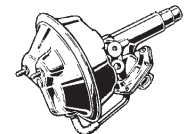
FOR ALFA ROMEO, FIAT, PININFARINA



Model	Item No.	Price
ALFA ROMEO		
Alfa 1600, 1965-68 (uses 1), 1969, (uses 2)	05004	\$355.00
Spider 1971-on, GTV, Berlina, 1971-74	0217	369.00
FIAT, PININFARINA, LANCIA		
124 Spider, Pininfarina Spider, 1971-on	9250	\$229.00

BRAKE BOOSTER KITS

FOR 1965-69 ALFA ROMEO AND LANCIA SCORPION



When your brake booster leaks, brake pedal effort becomes very hard. Our complete kits solve leaking booster problems. Major kit and air valve kits are both needed to completely rebuild the booster. Fits 1965-69 Alfa Romeo 1600 & 1750, and Lancia Scorpion Bonaldi or Benditalia boosters. Check air valve shape and booster manufacturer.

	Item No.	Price Each
Major kit, 7" diaphragm	1406940	\$ 68.50
Pentagonal air valve kit	1416841	189.50

Learn more about brake bleeding at our website.

Need help finding a part? Call one of our Sales Advisors at **1-800-726-0555** 61