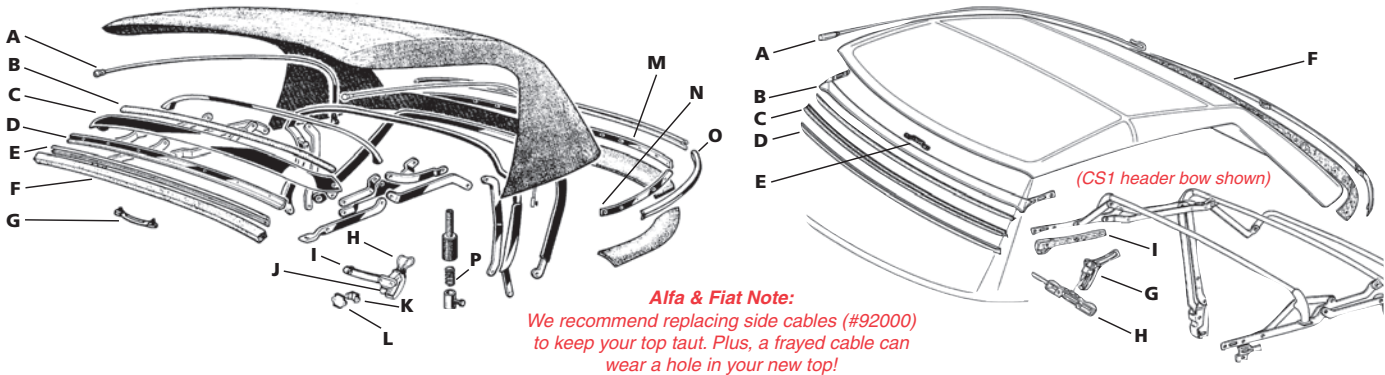


REPLACE WORN OR MISSING TOP HARDWARE

If you're replacing your top, now is a good time to check for worn or missing hardware and dry-rotted rubber seals. We carry the most commonly needed items. If your Alfa top leaks, but is otherwise in good condition, see our CD-ROM, containing video footage, on page 45.



ALFA ROMEO SPIDER, 1971-94

Description	Item No.	Qty Req'd	Price
A Top side cable	92000	2	\$ 8.50
B Top inner molding	82724	1	18.45
C Front header bow	37717	1	249.00
D Inner top plastic strip	43642	1	52.50
E Outer molding channel	03502	1	45.50
F Top outer molding	82723	1	37.95
G Top handle	36002	1	28.95
H Latch strap	03567	2	14.65
I Hold down strap	03566	2	14.95
J Top latch handle, 1991-94*	03535	2	119.50
K Latch hook, 1991-94*	37719	2	52.95
L Mounting plate	43641	2	12.95
M Inner rear mounting strip	37722	1	39.50
N Inner side mounting strip (fits L&R)	37725	2	16.95
O Driver side chrome trim	37723	1	68.80
P Top cable spring	03602	2	3.20

* Can be used on earlier cars if used in pairs.

FIAT, PININFARINA SPIDER, 1968-85

Description	Item No.	Qty Req'd	Price
A Top side cable	92000	2	\$ 8.50
B Header bow, 1979-82 CS2 chassis*	03549	1	374.00
B Header bow, 1983-85 DS chassis*	03551	1	389.00
C Front windshield, rubber seal	43501	1	29.95
D Seal channel (plastic)	03546	1	29.50
E Handle	37709	1	27.95
F Rear channel rail	37711	1	188.50
G Top latch (set of 2), 30mm screw spacing, 1968-82*	03548	1	169.50
G Top latch, driver side, 40mm screw spacing, 1982-85*	03552	1	109.50
G Top latch, pass side, 40mm screw spacing, 1982-85*	03553	1	109.50
H Top latch hook, driver side 1968-on	37713	1	69.50
H Top latch hook, pass. side 1968-on	37714	1	69.50
I Plastic cover (above dr. side window)	37715	1	31.95
I Plastic cover (above pass. window)	37716	1	31.95
- Rear deck hook, 1968-82	03554	2	28.95
- Top frame shoulder bolt	36096	2	10.55

TOP STRAPS FOR ALFA & FIAT

Straps keep top in place to prevent wear & chafing. As original.

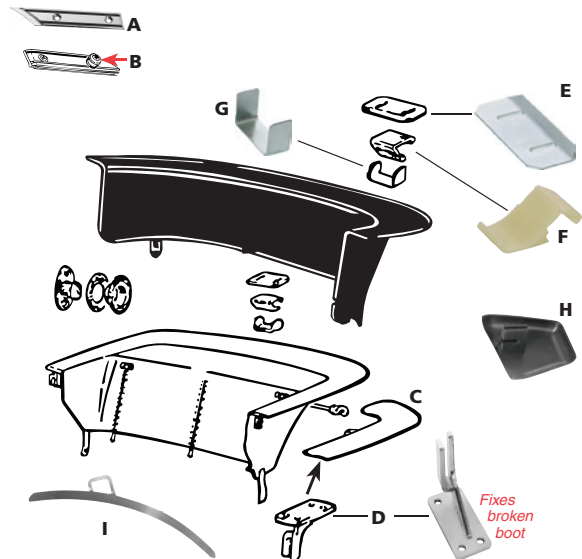
Alfa Romeo Spider, 1971-94 #36007 **\$17.95 ea.** (need 2)
 Fiat 124, 2000, 1968-85 #36006 **\$18.95 ea.** (need 2)



* Note: There were three different header bows. 1968-78-type bow is no longer available. This bow fits our top #2032 (see p. 4). The 1979-82-type header bow (#03549) uses latches with 30mm screw spacing (#03548). The 1983-85 header bow (#03551) uses latches with 40mm screw spacing (#03552/03553). Our top #2033 fits these two header bows. We can supply a top and header bow for any 1968-on car, but they must match each other. Please call with questions.

TOP BOOT HARDWARE

ALFA ROMEO	Item No. Driver	Item No. Pass.	Price
A Rear deck chrome trim, 1971-90, except Quad	43627	43626	\$ 69.50
A Rear deck chrome trim, 1983-90 Quad	43629	43631	74.50
A Rear deck chrome trim, 1986-94	43629	43631	74.50
B Top Boot Button, 1972-94	36025	—	22.95
C Complete inner plastic backing plate w/ hardware, Veloce & Quad models w/ padded/zippered boot	36029	36028	122.25
D Steel hook to repair plastic, 1986-94 Veloce & Quad Models w/ padded/zippered boot	35913	35914	36.95
E Top boot clip back plate (need 12), 1972-94	36022	—	3.90
F Top boot clip plastic pc. (need 12), 1972-94	36021	—	6.65
G Top boot clip metal tab (need 12), 1972-94	36023	—	2.95
FIAT			
H Top boot hook, 1970-85	36012	36014	19.25
I Top boot fish plate, 1968-82, Except 83-85 Pininfarina Spider	36032	36033	38.50



Need help finding a part? Call one of our Sales Advisors at **1-800-726-0555** 5